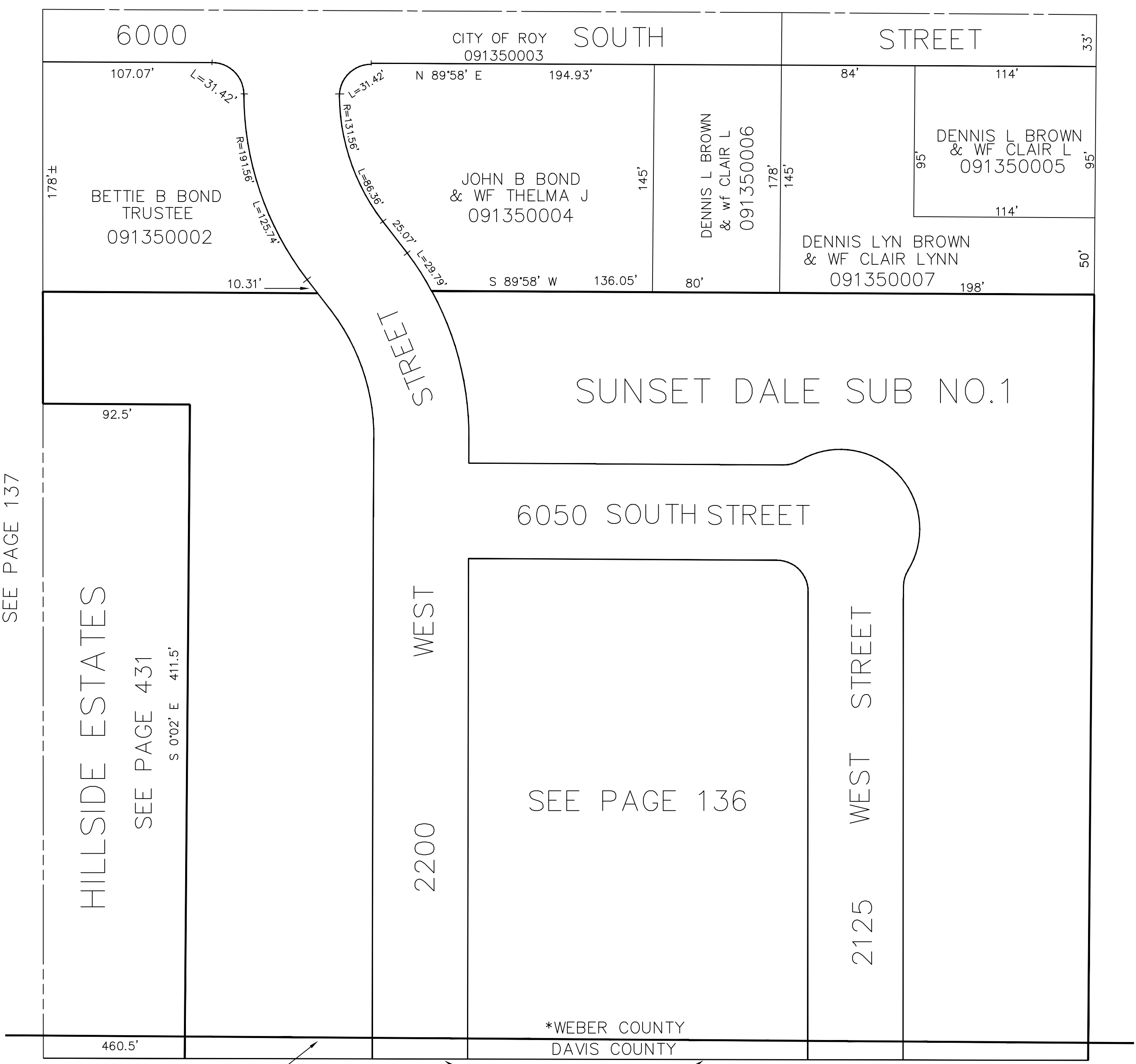


NE 1/4 OF NW 1/4 OF SE 1/4
SECTION 23, T5N, R2W, S.L.B. & M.

TAXING UNIT: 41

ROY CITY
SCALE 1" TO 50'

SEE PAGE 107



SEE PAGE 137

SEE PAGE 133

HILLSIDE ESTATES
SEE PAGE 431
S 0'02" E 411.5'

*RETRACED WEBER/DAVIS COUNTY LINE
BK 56 PGS 88-92 E#1885948

SOUTH LINE OF SUBDIVISION